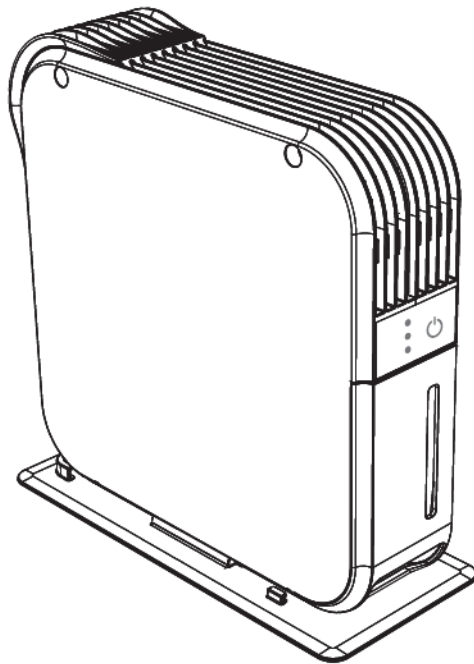


---

**PHOTOCATALYST AIR PURIFIER DEHUMIDIFIER**

USER MANUAL



Please read instructions before use  
Keep for future reference

Visit [ecoair.org](https://ecoair.org) to register your product  
or terms and conditions

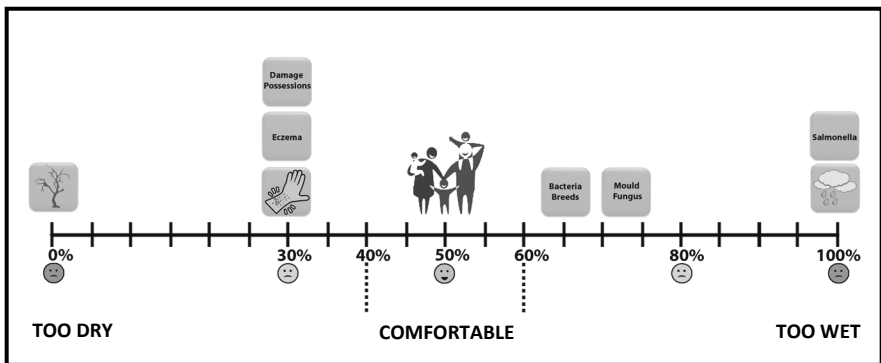
# WELCOME

Thank you and congratulations for choosing an EcoAir dehumidifier to help you improve the air quality within your environment. Inside you will find many helpful tips on how to use and maintain your dehumidifier efficiently. Just a little preventative care can save you money and prolong the life of your dehumidifier.

The purpose of the dehumidifier is to remove the excess moisture in the air by detecting the humidity level in the room. By keeping humidity within recommended levels, a dehumidifier combats household damp, mould and mildew. Dehumidifiers can help to reduce the symptoms of asthma, allergies, and other respiratory health conditions. They can also be used to help dry laundry quicker and control moisture-based damage (such as the aftermath of flooding, leaks or rising damp) to valuable belongings and furniture.

## HUMIDITY GUIDE

There will always be water vapour in the air. The water vapour (or commonly known as moisture) in the air is measured in Relative Humidity (RH) %. RH is the ratio of the actual amount of water vapour in the air to the amount it could hold when saturated expressed as a percentage. Too much or too little moisture in our homes can be unhealthy and uncomfortable. The optimum humidity level is between 40% and 60% (RH) where we feel most comfortable.



### Low humidity

Low humidity indoors causes excess drying which can trigger skin irritations such as eczema, chapped skin and dry nose. It can also damage possessions, such as wooden furniture, musical instruments and artwork by drying it out too much.

### High humidity

High humidity indoors causes damp and condensation. The damp left by condensation can damage plaster, wall paper, furniture, vehicles, timber windows, doors and clothes. It can be harmful to our health when bacteria thrives, causing mould and fungus.

### Maintaining safe levels of humidity

It is important to maintain a consistent humidity range to preserve furniture, paintings, door and window frames. High humidity causes swelling, corrosion, softening of glues and paint. Low humidity causes shrinking, cracking, warping of wood surfaces and gaps in joints, doors and windows. Frequent changes in humidity levels can accelerate damages to property and belongings.

### Condensation

The warmer the air, the more moisture the air can hold than colder air. So, when the air inside the house becomes colder, the moisture contents in the air becomes saturated, and gets heavier resulting in moisture concentration on the coldest parts of the house particularly on the windows, bathroom mirrors and walls. This is condensation, caused by a sudden increase in humidity, cooking, showers, drying clothes, inadequate ventilation and poor thermal insulation.

Condensation does not disappear instantly even with the dehumidifier on. Where excessive condensation appears for example, on your windows, you may want to open your windows to expel the excess humidity for several minutes. It will take a while for the condensation to generally increase the humidity in the room. Once the humidity level in the room around the dehumidifier is increased above the level you have set on the dehumidifier, it will then begin the dehumidification process.

## INDEX

---

Important Safety Instructions	1
BS Plug Wiring	2
The Appliance and Accessories	3
Important Safeguards	4
Installation	5
Control Panel & Filtrations	6
Emptying the Water Tank	7
Cleaning, Maintenance and Storing the appliance	8
Troubleshooting	9 - 10

## IMPORTANT SAFETY INSTRUCTIONS

---

### WARNING!

This dehumidifier is intended for use in domestic households and similar working and residential environments and is not intended for outdoor use. It must be used only as a domestic appliance. EcoAir cannot be held liable for damage resulting from incorrect or improper use or operation

- Do not alter or modify the appliance's characteristics in any way. Should repairs be necessary, contact EcoAir's Authorised Service Centre. Self-servicing or unauthorised servicing can be dangerous.
- The appliance must be installed in accordance with the relevant national legislation.
- The appliance is not intended for use by persons (including children) with reduced physical, sensory or mental capabilities, or lack of experience and knowledge, unless they have been given supervision or instruction concerning the use of the appliance by a person responsible for their safety.
- Children and pets should be supervised to ensure they do not play with the appliance.
- Do not use the appliance if the power cable, cord is damaged. It must be replaced by an EcoAir's Authorised Service Centre.
- The appliance must always be placed in an upright position on an even level surface to avoid any damage, during use or transportation and when put into storage.
- The appliance must be plugged into a grounded 3-prong outlet and ensure that the voltage matches the rated specifications. If in doubt, check with a qualified technician.
- Do not use with extension cables or multi sockets. Do not pull or place strain on the power cord when moving appliance.
- Always unplug the appliance before cleaning or maintenance or when not in use.
- The appliance must not be placed or used where the atmosphere may contain combustible gasses, oil or sulphur or solvent, or near heat sources (such as heaters or in server rooms) or excessive dust.
- Do not place or rest any objects on the appliance and do not cover while in use. Always observe the minimum room size for storing and operating the appliance.
- Allow a minimum of 20 cm clearance around the top of the appliance.
- Filter must be cleaned every 2 weeks to avoid dust building up internally causing overheating and malfunction.
- To protect against electric shocks, do not immerse or spray the appliance or any of its parts in water.
- Ensure the air inlet and outlet are not blocked or covered when in use.
- Do not insert fingers or any objects into the air inlet or outlet openings.
- Do not operate or store the appliance under direct sunlight.
- Always switch off the power before unplugging from the socket.
- Do not leave the appliance running or plugged in over a long period of time unattended. Leaving unattended electrical appliances running is unsafe.
- Always make sure your hands are dry when operating the appliance.
- Only operate the appliance within the specified operating temperature range.
- Do not run power cord under carpeting, or cover with rugs or runners. Arrange the cord away from areas where it may become a trip hazard.
- This appliance must not be used outdoor or wet areas such as bathrooms.
- When drying laundry, do not place laundry on the appliance. Always ensure the laundry is placed a safe distance from the dehumidifier at least 40cm.
- Always clean the filter and cover the dehumidifier with a dust sheet when storing the dehumidifier.

## BS PLUG WIRING

---

Should it be necessary to change the plug, please note the wires in the mains lead are colour coded as follows:

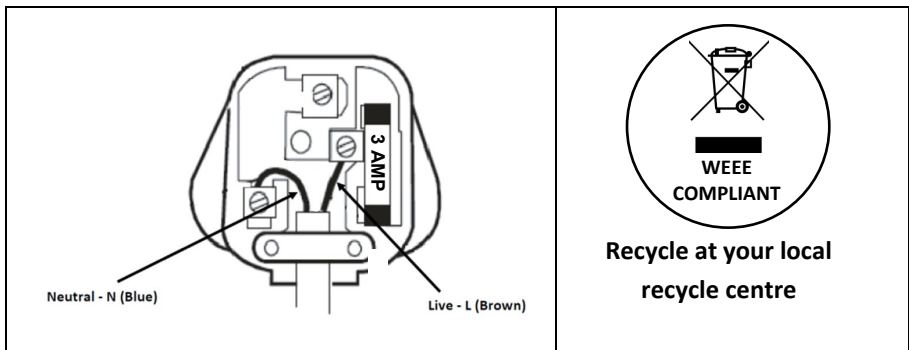
BLUE - NEUTRAL

BROWN – LIVE

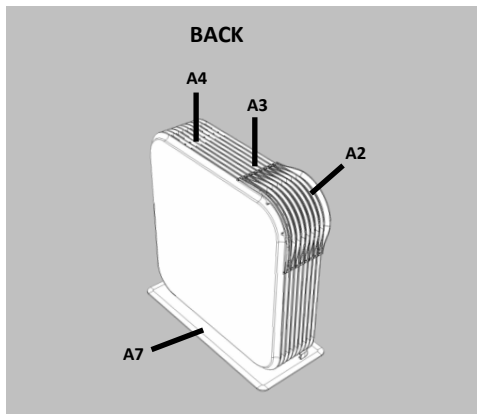
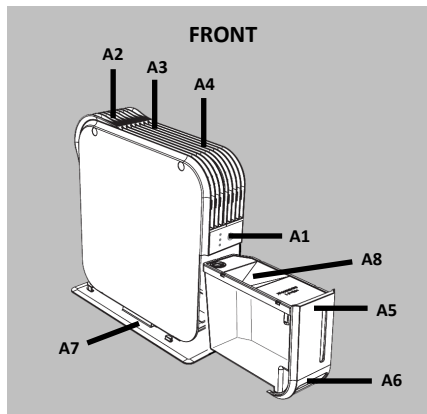
In the event that the colours of the wires in the mains lead of this appliance do not correspond with the coloured markings identifying the terminals in your plug, proceed as follows:

1. The BLUE wire is NEUTRAL and must be connected to the terminal which is marked with the letter N or coloured BLACK.
2. The BROWN wire is LIVE and must be connected to the terminal which is marked with the letter L or coloured RED.
3. Always ensure that the cord grip is positioned and fastened correctly.
4. If a 3A (BS 1363) fused plug is used it must be fitted with a 3A -fuse.  
If in doubt consult a qualified electrician.

Please note the Neutral and Live Terminals are marked as N and L respectively.



## THE APPLIANCE & ACCESSORIES



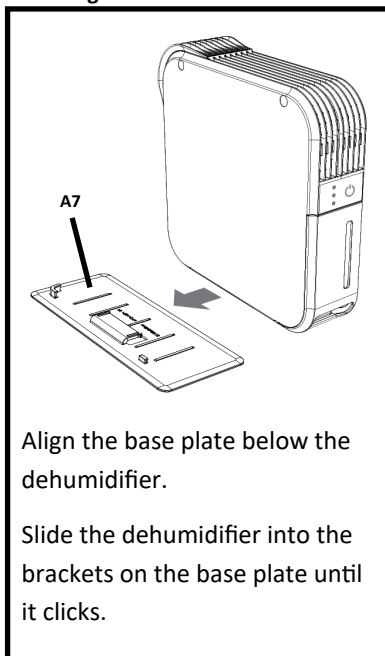
### Accessories List

A2	A7	B1

### DESCRIPTION

Key	Description	Key	Description
A1	Control Panel	B1	User Manual
A2	Filter		
A3	Air Inlet		
A4	Air Outlet		
A5	Water Tanks		
A6	Grip Handle		
A7	Base Plate		
A8	Water Tank Cover		

### Installing Base Plate

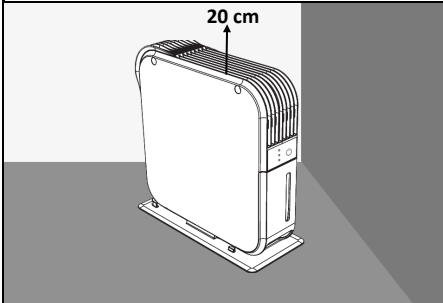


# IMPORTANT SAFEGUARDS

## WHERE TO POSITION YOUR DEHUMIDIFIER?

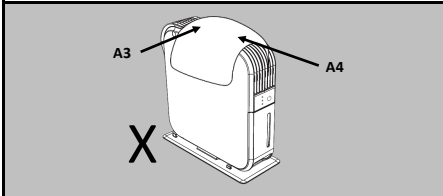
Ensure the unit is a safe distance away from a soft furnishing and away from direct sunlight.

**TIP:** Position the dehumidifier in the dampest area or wardrobe. As long as the internal doors are open the excess moisture from all of the rooms in the house will migrate naturally towards the dehumidifier and be processed.



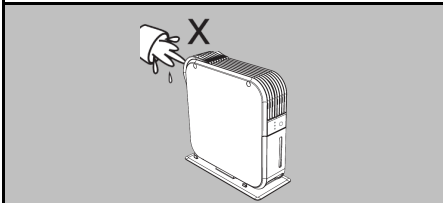
## DO NOT PLACE OBJECTS ON OR OVER THE APPLIANCE

Ensure the air inlet (A3) and air outlet (A4) are not obstructed. Obstruction will cause overheating and malfunction.



## DO NOT SPLASH

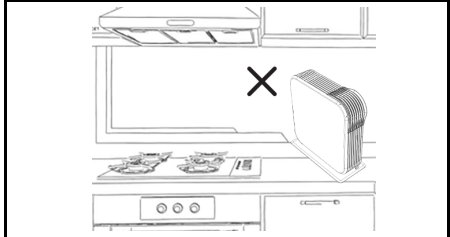
- Do not wash the appliance or immerse in water
- Do not allow water to drip on to the appliance



## AVOID HEATING EMITTING APPLIANCES

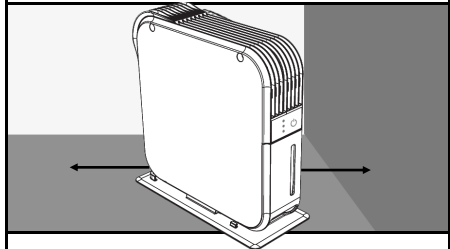


- Never use in close proximity to a heat source such as heater, tumble dryer, cooker).



## PLACE ON EVEN LEVEL SURFACE

- Always operate appliance on an even level surface to avoid leakage
- If appliance is on carpet, ensure the appliance is stable and level



## IMPORTANT

- Do not move the appliance or remove the water tank when the dehumidifier is running. It may cause damage, electric shock, water leak or spills.
- After turning the dehumidifier off, do not remove the power plug from the power socket immediately, allow the appliance to cool down for a minimum 5 minutes to help protect the internal components.
- Dusty, building sites or an industrial environment where particles can clog up the filter or internal components.

# INSTALLATION

## PLEASE READ IMPORTANT SAFEGUARDS BEFORE INSTALLATION

### FIND A SUITABLE POSITION

- Vesto is designed for small areas such as wardrobes, airing cupboards, cloakrooms.
- Position the Vesto (max > 30 sqft or 3 m2) on an even surface such as a shelf.
- If there is a problematic area with high humidity level, use a hygrometer to measure (available to purchase at [ecoair.org](http://ecoair.org)) in the property, you may wish to place it in that area initially.

### INSTALLING THE DEHUMIDIFIER

- Unpack the Vesto and plug in to the socket.
- Ensure there is a minimum clearance of 20 cm at the top of the Vesto.
- Always place the Vesto on a level even surface to avoid water leaks.
- Turn on the Vesto to start dehumidification.

### INITIAL OPERATION

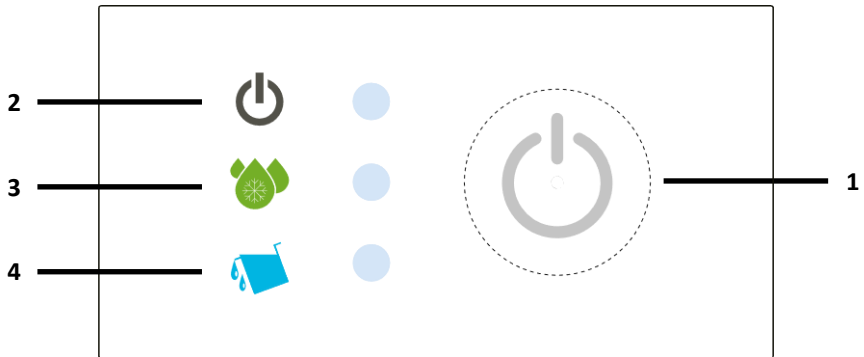
- When first using your Vesto it will work hard to reduce the humidity. You will initially need to empty frequently. As the area become drier, the Vesto naturally collects less water. This is normal.
- Once the power is restored after a power failure, the Vesto will continue to operate at the selected settings prior to the power failure.

### EXTERNAL BASE PLATE

- Slide base plate to the underside of the unit.
- This base plate is to ensure stability.



## CONTROL PANEL



1. **POWER** - Press the power key to turn on and off.
2. **POWER Indicator** will be on when running.
3. **DEFROST Indicator** flashes when defrosting.
4. **WATER FULL Indicator** - Water tank is full or incorrectly inserted.

## FILTRATIONS

### PHOTOCATALYST (INTERNAL FILTER)

#### What is Photocatalyst?

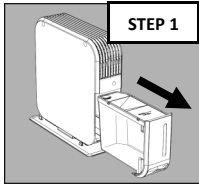
- Photocatalyst detoxicates and resolves harmful substances such as bacteria and virus.
- Photocatalyst occurs with the combination of the UVA light and the TiO<sub>2</sub> filter.
- In addition to the Photocatalyst, Silver Nano Filter is included to inhibit bacterial growth for additional protection.

### SILVER NANO FILTER (EXTERNAL FILTER)

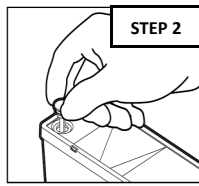
- An external Silver Nano filter that acts as the first defence against dust particles and inhibits bacterial growth
- This filter needs to be cleaned every 2 weeks and replaced every 6 months.

## EMPTYING THE WATER TANK

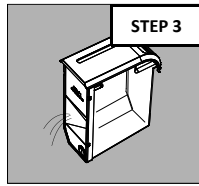
---



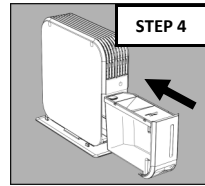
Pull water tank  
out



Pull the stopper  
upwards



Pour the water  
away



Insert the water tank

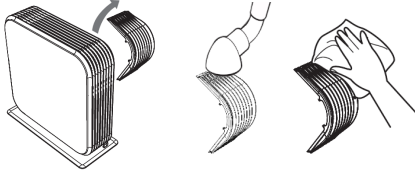
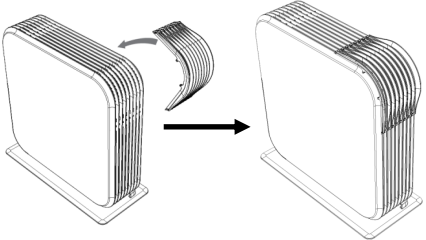
**When the water tank is full and the dehumidifier stops operating, the water full indicator lights up.**

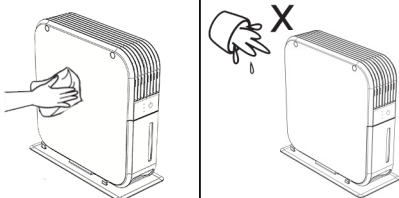
- Step 1)** Switch off the power and unplug. Allow 10 minutes to ensure all water collected drips into the water tank. Pull gently to remove.
- Step 2)** Pull the stopper from the cover of the water tank.
- Step 3)** Pour the water away. Clean the water tank, restore the stopper to the cover.
- Step 4)** Insert the water tank back to the correct position.

### NOTE :

- Do not move the unit or remove the water tank when the dehumidifier is running, as water may leak; causing damages to the dehumidifier or an electric shock.
- Clean the water tank with clean water if needed. Do not use detergent, solvent, abrasive or hot water to avoid damaging the dehumidifier.
- Do not remove or damage the float in the water tank or the dehumidifier will not operate properly.
- The Water Full light indicator illuminates if the water tank is not correctly in position.
- Do not tilt the dehumidifier when removing the water tank.





# CLEANING, MAINTENANCE & STORING THE APPLIANCE

STEP 1 - CLEANING YOUR EXTERNAL FILTER	STEP 2 - REPLACING YOUR EXTERNAL FILTER
	<p style="text-align: center;"><b>Rear</b></p> 
<ol style="list-style-type: none"> <li>1. Turn off and leave for 5 minutes, then unplug the dehumidifier. Slide off to remove the filter.</li> </ol>	<ol style="list-style-type: none"> <li>1. Slide to fit with the grooves. Slide off to remove</li> </ol>
<ol style="list-style-type: none"> <li>2. Clean the filter with a brush or vacuum cleaner. (Washing will weaken the germicidal effect of the filter).</li> </ol>	<p>It is recommended that the external filter is replaced every 6 months for optimal performance and hygiene standards. To purchase a replacement filter please visit: <a href="http://www.ecoair.org">www.ecoair.org</a></p>
<ol style="list-style-type: none"> <li>3. Slide the filter back into position.</li> </ol> <p><b>Tip:</b> Clean your filter every 2 weeks to keep your air clean and prolong the life of your dehumidifier. Replace your filter every 6 months</p> <p><b>Note:</b> If the filter is covered with dust, the airflow and the performance of the dehumidifier will be affected and may cause malfunction.</p>	

STEP 3 - CLEANING YOUR DEHUMIDIFIER	STEP 4 - STORING YOUR DEHUMIDIFIER
<ol style="list-style-type: none"> <li>1. Turn off and leave for 5 minutes, then unplug the dehumidifier.</li> </ol>	<ol style="list-style-type: none"> <li>1. Turn off the dehumidifier, wait 30 minutes and unplug the dehumidifier from the power socket.</li> </ol>
	
<ol style="list-style-type: none"> <li>2. Clean the surface with a soft damp cloth.</li> </ol>	<ol style="list-style-type: none"> <li>2. Leave the dehumidifier to drain for approximately one day. Clean and dry the water tank.</li> </ol>
<ol style="list-style-type: none"> <li>3. Dry thoroughly with a towel after cleaning.</li> </ol>	
<ol style="list-style-type: none"> <li>4. For cleaning tank, see Emptying the Water Tank section.</li> </ol>	<ol style="list-style-type: none"> <li>3. Clean the filter and the dehumidifier. Cover the dehumidifier to prevent it from gathering dust. Store upright in a cool dry place.</li> </ol>
<p><b>Caution:</b></p> <ul style="list-style-type: none"> <li>• Do not wash the unit or immerse in water.</li> <li>• Do not let water drip into the air inlet or outlet.</li> <li>• When cleaning the water tank, take caution to avoid damaging the float.</li> </ul>	
<ol style="list-style-type: none"> <li>4. Do not expose to direct sunlight.</li> </ol>	

## TROUBLESHOOTING

CHECK THE FOLLOWING POINTS BEFORE CONTACTING TECHNICAL SUPPORT.

PROBLEM	REASON	SOLUTION
 <b>Power Indicator</b>	Flashes and the unit pauses when temperature is out of range.	Move the unit to suitable operation temperature range (15°C to 35°C)
 <b>Defrost Indicator</b>	Flashes and the unit will go into defrost mode in low temperature or low humidity condition.	Move the unit to suitable operation temperature range (15°C to 35°C)
<b>No Power</b>	Dehumidifier is not plugged in or there is no power supply	Plug into a main socket and switch ON. If necessary, try another main socket.
 <b>Defrost</b>	Filter clogged *	Clean or replace the external filter
	The air inlet or outlet is blocked or covered	Remove obstructions
 <b>Water Full</b> <b>Both indicator will blink.</b>	Water tank is full or installed incorrectly	Empty water tank or re-install correctly
	Ambient temperature or humidity level out of range	Check that the temperature and humidity are within the operating ranges, use a hygrometer to measure (available to purchase at <a href="http://ecoair.org">ecoair.org</a> )
<b>Noisy</b>	Water tank or filter fitted incorrectly	Check and refit the water tank or filter Check unit is on an even level surface
	Foreign object fallen through the vent into the dehumidifier	Contact <a href="mailto:support@ecoairgb.com">support@ecoairgb.com</a> for AdHoc Service
	Dehumidifier placed on an uneven surface	Place on an even surface. If necessary test with a spirit level

## TROUBLESHOOTING

### CHECK THE FOLLOWING POINTS BEFORE CONTACTING TECHNICAL SUPPORT.

PROBLEM	REASON	SOLUTION
<b>Not Collecting Water</b>	Room is very cold or very dry for the current settings	Check the humidity with a hygrometer or increase the room temperature (15°C to 35°C)
	Filter dusty *	Clean the air filter or replace it
	Dehumidifier set up incorrectly	Refer to manual for important safeguard, installation and operation.
	Room Temperature is too hot	Turn off the dehumidifier. Decrease the room temperature and check the operating temperature range, room size (15°C to 35°C)
<b>Water Leaking</b>	Dehumidifier on uneven surface or water tank fitted incorrectly	Ensure the dehumidifier is on a flat, even surface, use a spirit level to check, remove tank and replace correctly
	Filter clogged *	Clean or replace filter *
	Removing the tank whilst the dehumidifier is running	Always unplug the dehumidifier and allow 30 minutes before removing the tank
	Moving or tilting the dehumidifier whilst water residue remains inside the dehumidifier	Always unplug the dehumidifier, wait 30 mins, empty the tank and reinsert the tank before moving the dehumidifier.
	Damaged water tank	Remove the water tank, fill with water and place on a hard even surface to test for leakage

- \* Dust can build up internally inside the dehumidifier, causing obstruction to airflow and overheating. This will cause malfunction. Common symptoms are Check Light On, Water Leaking and Not Collecting Water (see details above). When this happens, you will need to request a service at our Service Centre. \* Clean the filter regularly (recommended every 2 weeks) to avoid malfunction.

In the unlikely event of a problem with your product, please refer in the first instance to:  
**ECOAIR TECHNICAL SUPPORT**  
[www.ecoair.org/support](http://www.ecoair.org/support)